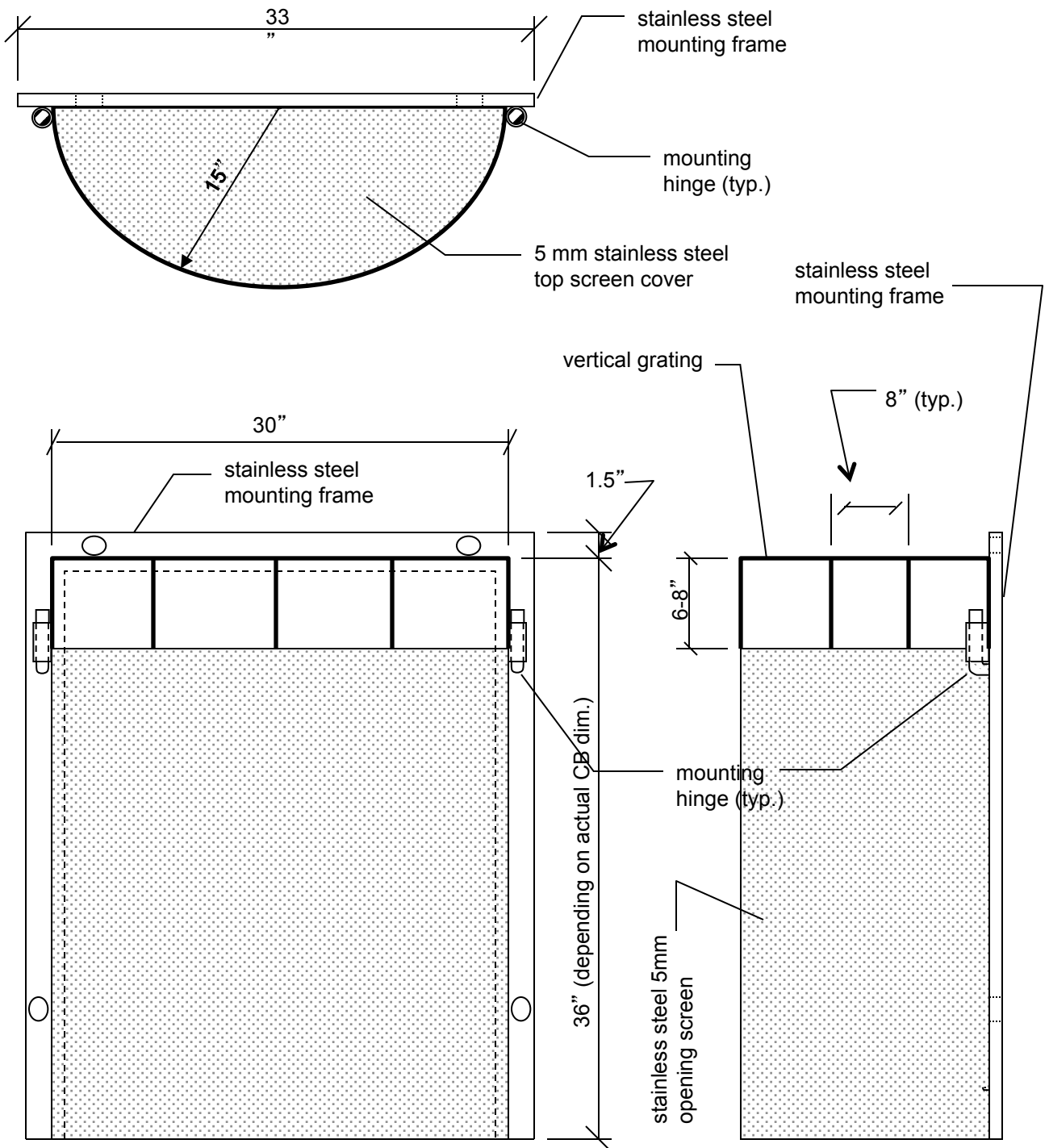
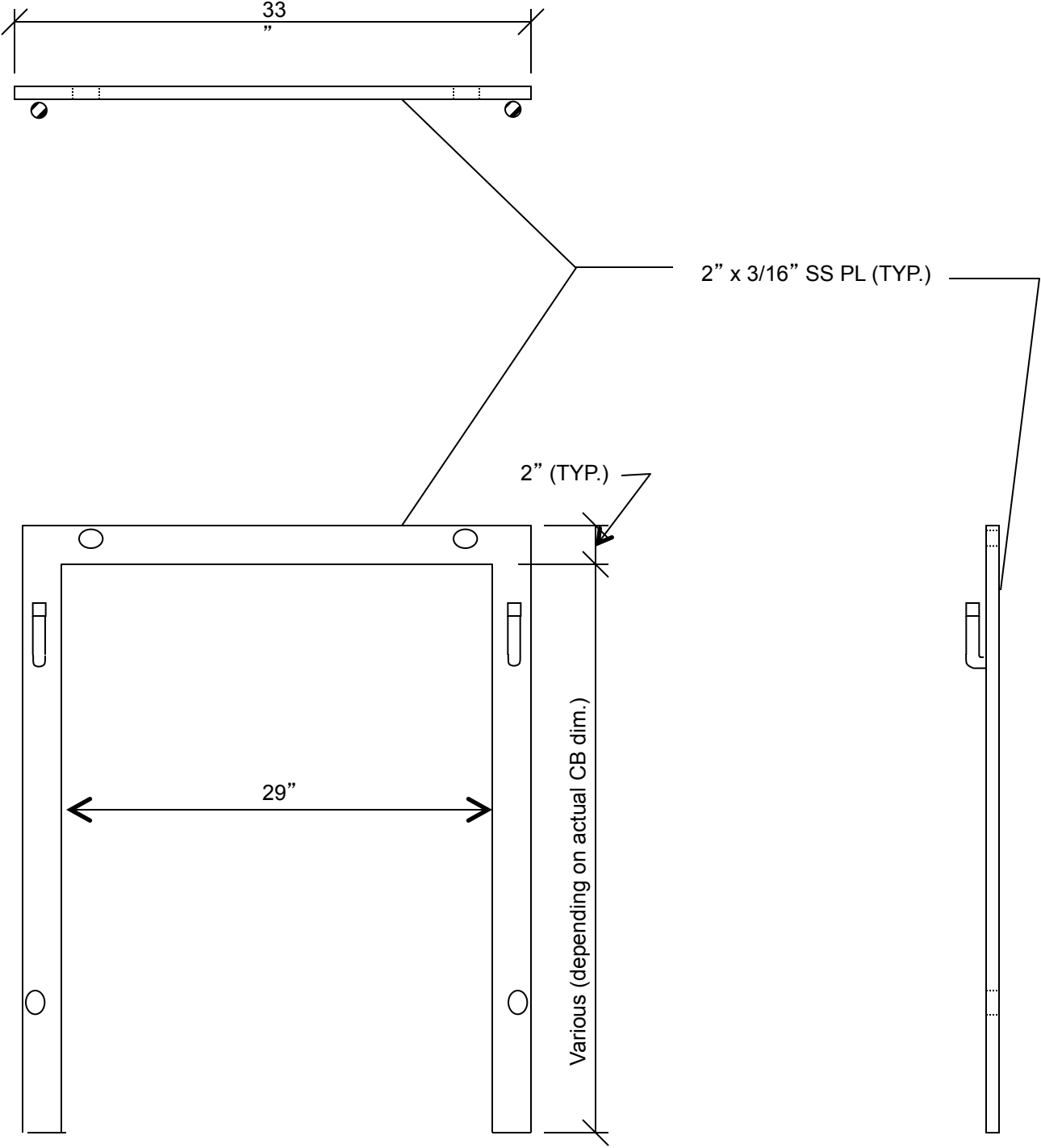


MODEL ST3G: REMOVABLE INSTALLATION WITH VERTICAL GRATING



MOUNTING FRAME



DESCRIPTION OF DESIGN ELEMENTS

- The mounting frame can be made of coated or stainless steel. Frame members are made from 2” flat bars with a minimum thickness of 3/16 inch.
- The insert screen is made of heavy-gage sheet metal with 5 millimeter (mm) openings. Total openings constitute 50% of the screen surface. Top 4 inches of the screen is grated with bars spaced at 2 inches on center.
- Insert top cover is made of heavy-gage sheet metal screen with 5 mm openings and 1” support frames.
- Structural support members for the screen and top cover are made of coated or stainless steel. Members are made from 1” flat bars with a minimum thickness of 1/8 inch.
- Mounting frame members are welded
- Structural support frame members are welded
- Insert screens are welded onto structural support frames.
- Mounting frames are bolted onto the catch basin wall at the outlet opening. Mounting frames are to be anchored at all four corners with HILTI expansion anchors or equal.
- Inserts are installed vertically onto the mounting frame directly in front of the outlet opening.
- The insert is completely removable by lifting it off the mounting frame